

# State of Wyoming Corner Record

(In compliance with the CORNER PERPETUATION AND FILING ACT, Wyoming Statutes, 1997 Section 33-29-140 et. seq., and the Rules and Regulations of the Board of Professional Engineers and Professional Land Surveyors)

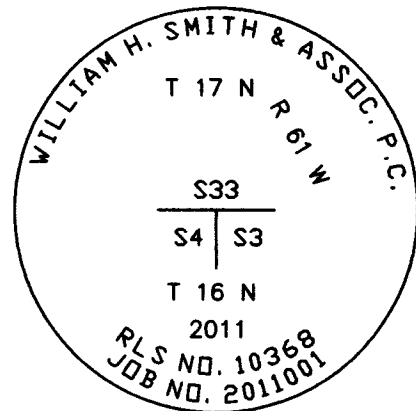
Reverse side of this form may be used if more space is needed.

Record of original survey and citation of source of historical information (if corner is lost or obliterated). Description of corner monumentation evidence found and/or monument and accessories established to perpetuate the location of this corner. Sketch of relative location of monument, accessories, and reference points with course and distance to adjacent corner(s) (if determined in this survey). Method and rationale for re-establishment of lost or obliterated corner.

RECORD: Set a sandstone 20"x12"x4" for closing corner to secs. 3 & 4.

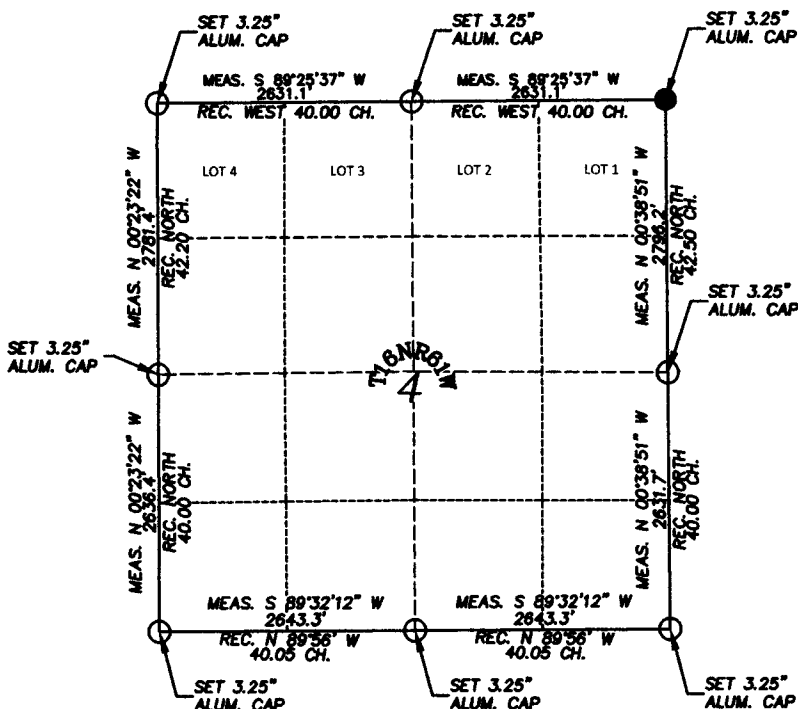
FOUND: NOTHING

SET: A 3.25" aluminum cap on 2.5" aluminum pipe stamped, "T17N, R61W S33/S4/S3 T16N 2011 RLS NO. 10368 JOB NO. 2011001" flush with ground.



## Monument location

T 16 N R 61 W



## Monument Inscription

Legend:

- File corner/found
- Controlling corner

Note: Datum based on Wyoming State Plane Coordinate System East Zone NAD 83.

Date of Field Work: 07/04/2011

Office Reference: 2011001

Prepared by: RAW

## Cross Index Plat

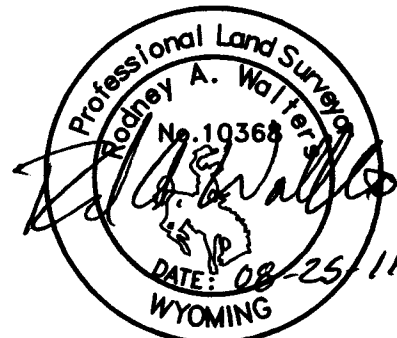
	1	2	3	4	5	6	7	8	9	10	11	12	13	14	15	16	17	18	19	20	21	22	23	24	25
A													●												
B																									
C		6		5		4		3		2		1													
D																									
E																									
F																									
G			7		8		9		10		11		12												
H																									
J																									
K																									
L			18		17		16		15		14		13												
M																									
N																									
O																									
P			19		20		21		22		23		24												
Q																									
R																									
S																									
T			30		29		28		27		26		25												
U																									
V																									
W																									
X			31		32		33		34		35		36												
Y																									
Z																									

Firm/Agency, Address

WILLIAM H. SMITH & ASSOC.  
P.O. BOX 820  
GREEN RIVER, WY 82935  
Phone Number: (307) 875-3638

This corner record was prepared by me or under my direction and supervision.

For Official Use Only



RECORDED 2/24/2012 AT 10:44 AM REC# 585698 BK# 2261 PG# 966  
DEBRA K. LATHROP, CLERK OF LARAMIE COUNTY, WY PAGE 1 OF 1

Corner Name NE Corner Section 4, T 16 N, R 61 W, 6th P.M.

County: Laramie Wyoming

Cross-Index No.: A-13